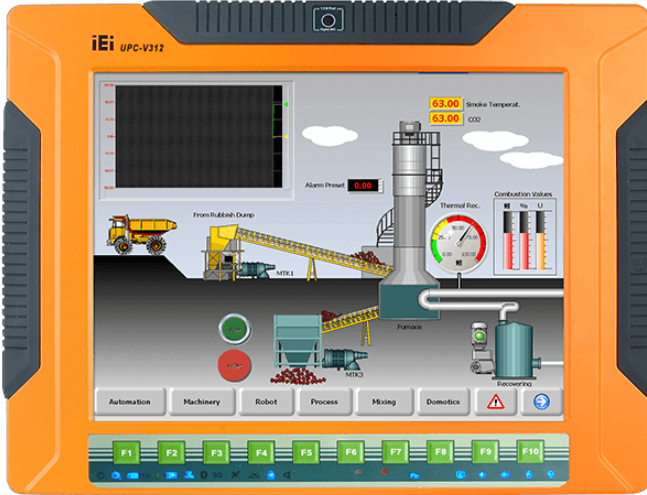


UPC-V312-D525

Intel® Atom™ D525 Dual Core Processor

Features



- » Fully IP 65 compliant with Intel® Atom™ D525 1.8GHz dual-core processor
- » 12.1" 600 nits 1024 x 768 LCD with LED backlight
- » Dual DC input, 9V ~ 36V and 10.5V ~ 36V, switch automatically
- » Dual-band 2.4/5 GHz Wi-Fi 802.11 a/b/g/n 3T3R MIMO design
- » Reserved space for 3.75G HSUPA USB module
- » Optional GPS receiver
- » Optional EM or Mifare RFID reader
- » Optional Bluetooth module
- » Built-in 2-mgeapixel webcam with AF, AE and AWB capabilities
- » CAN-bus interface with isolation
- » Robust die-casting aluminum chassis

Specifications

| | |
|------------------------|--|
| Display | |
| Backlight MTBF(hrs) | 50000 |
| Brightness(cd/m2) | 600 |
| Contrast Ratio | 700 : 1 |
| LCD Size | 12.1" |
| Max Resolution | 1024(W) x 768(H) |
| Environment | |
| Humidity | 10% to 95% (non-condensing) |
| Operating Temperature | -20°C~60°C |
| Storage Temperature | -40°C~85°C |
| Expansion Slots | |
| Expansion Slots | PCIe Mini slot for Wi-Fi module |
| | PCIe Mini slot |
| I/O Interface | |
| I/O Ports and Switches | RS-422/485 (4-pin box header) |
| | RS-232 (DB-9 connector) |
| | CAN-bus (3-pin terminal block) |
| | GbE LAN (RJ-45 connector) |
| | 4 x USB connector |
| | Audio jack (Line-out, Mic) |
| | VGA port (DB-15 connector) |
| RAM | On-board 2GB DDR3 SO-DIMM (system max. 2GB) |
| LCD | |
| LCD Color | 16.2M |
| Pixel Pitch (mm) | 0.24mm x 0.24mm |
| Viewing Angle (H-V) | 150° / 130° |
| Other Features | |
| System Cooling | Fanless |

| Physical Characteristics | |
|--------------------------|--|
| Cutout Dimensions | 338.5 x 276.25 |
| Dimensions (LxWxH) (mm) | 338.5 x 276.25 x 62.86 |
| Power | |
| Power adapter | Input: 90VAC~264VAC, 50/60Hz; Output: 19V DC |
| System | |
| Chipset | Intel® ICH8M |
| CPU | Intel® Atom™ D525 1.8GHz dual-core processor |
| SSD | CF Type II / mSATA (SATA2 signal) |
| Touch | |
| Touch Controller | DMC 9000 |
| Touch Screen | 5-wire resistive type with RS-232 interface |
| Weight | |
| Weight | 4.5 kg/ 6.8 kg |
| I/O Interface | |
| I/O Interface | 1 x AT/ATX Switch |
| | VGA((DB-15)) |
| | 4 x USB2.0 |
| | 1 x Reset Button |
| | 1 x RS-422/485((4-pin box header)) |
| | 1 x RS-232((DB-9)) |
| | 2 x Power In(DC jack/terminal block) |
| | 1 x Mic |
| | 1 x CAN-bus((3-pin terminal block)) |
| | 1 x LAN(RJ-45 for Gbe) |
| | 1 x Line out |

Ordering Information

| | |
|------------------------|---|
| UPC-V312-D525/R/2G-R13 | 12.1" 600cd/m ² XGA fanless full IP65 panel PC with Intel® Atom™ D525 dual core 1.8GHz,802.11a/b/g/n wireless module, resistive touch screen, 2M camera,microphone,2GB DDR3 RAM, R13 |
|------------------------|---|

Packing List

| | |
|-------------------|---------------|
| 1 x Power Adpater | 1 x Screw Kit |
| 1 x Touch Pen | |