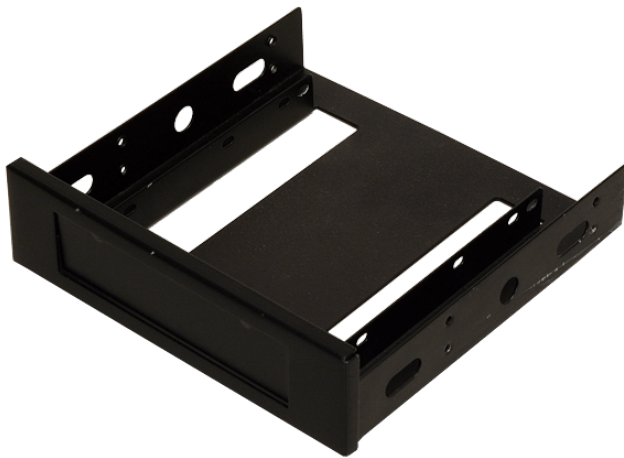


XWC-410030507220-RS

5.25" External Bay to 3.5" HDD / Device Bay, Black



Features

- * Durable one piece aluminum construction
- * Compatible with any standard 5.25" external drive bay
- * Fits 1 x 3.5" device / hard drive
- * Mounting screw holes for 3.5" HDD installation
- * Compatible with any standard 3.5" HDD and 3.5" device

Specifications

General	
Dimensions	150 x 146 x 42 (L x W x H) (mm)
Material	
Material	Aluminum
Weight	
Weight	0.2 kg (Gross)
Drive Bay Space	
Drive Bay Space	One 5.25" drive bay
HDD Type	
HDD Type	Internal 3.5" device bay
Hot Swap	
Hot Swap	No
Keylock	
Keylock	No
Signal Out	
Signal Out	No
Color	
Color	Black
Interface	
Interface	SATA / IDE / SSD

Ordering Information

XWC-410030507220-RS	磁碟机转换架,SECCT=1.0mm;模具;全烤局部防烤;CCL
---------------------	----------------------------------