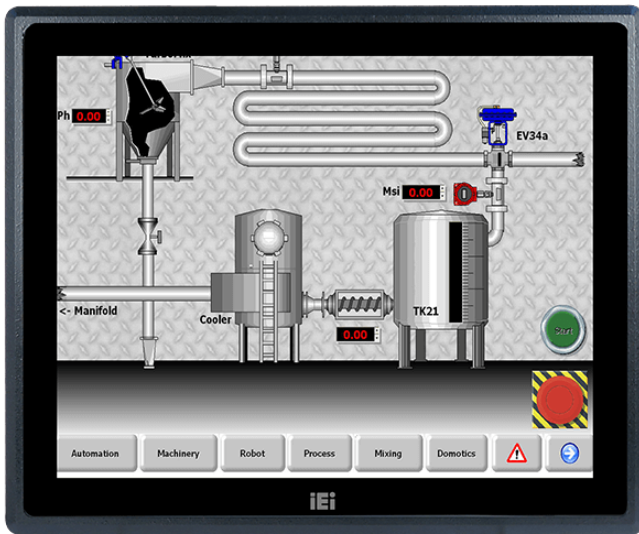


# PPC-F17B-BT

## 17" Fanless Intel® Bay Trail Solution



### Features

- » Intel® Celeron® J1900 quad-core SoC
- » Robust IP65 aluminum front bezel
- » Aesthetic ultra-thin bezel for seamless panel mount installation
- » Projected capacitive multi-touch and resistive single touch options
- » Dual full-size PCIe Mini card expansion
- » 9V~36V DC wide range DC input

### Specifications

Display	
LCD Size	17"(5:4)
Brightness(cd/m2)	350
Max Resolution	1280 (W) x 1024 (H)
Contrast Ratio	800:1
Backlight MTBF(hrs)	50000
I/O Interface	
I/O Ports and Switches	2 x RJ-45 LAN Port
	2 x USB 3.0
	2 x USB 2.0
	1 x HDMI™ output
	2 x RS-232
	1 x RS-232/RS-422/485
	1 x VGA
	1 x 9 V~36 V DC jack (4-pin)
	1 x 9 V~36 V DC terminal block
	1 x Line-out (PPC-F15B and PPC-17B only)
	1 x Power switch
Power	
Power adapter	9V~36V DC
Environment	
Operating Temperature	-10°C~50°C (14°F~122°F)
Humidity	10% to 95% (non-condensing)
Storage Temperature	-20°C~60°C (-4°F~140°F)
IP Level	IP 65 compliant front panel
Physical Characteristics	
Dimensions (LxWxH) (mm)	341.4 x 408.4 x 51.8
Cutout Dimensions	323 x 390
Weight	

Weight	5 kg
LCD	
LCD Color	16.7M
Pixel Pitch (mm)	0.26 x 0.26
Viewing Angle (H-V)	170° / 160°
Touch	
Touch Screen	2-point projected capacitive type touchscreen 6H
Touch Controller	5-wire resistive single-touch type flat touchscreen 3H

## Ordering Information

PPC-F17B-BTi-J1/2G/R-R13	17" 350 cd/m2 SXGA Panel PC with Intel® Celeron® Processor J1900, TDP 10W, 2GB RAM*1, support iRIS-2400, black color, 9-36V DC input, resistive touch window with AG coating, R13
--------------------------	---

## Packing List

1 x PPC-FxxB-BTi Panel PC	1 x User Manual
1 x Touch Pen	1 x Power Cord
1 x Screw Pack	1 x Power Adapter