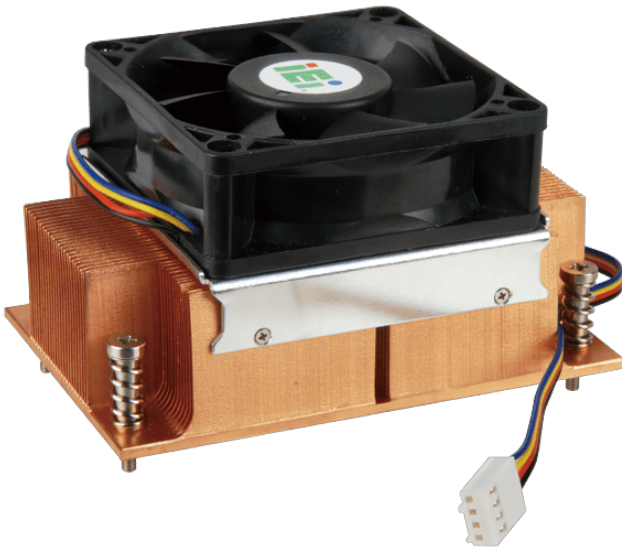


CF-1150SE

IEI customized cooler for LGA1150 Intel CPU, RoHS

Features

High performance thermal solutions



Specifications

CPU Solution	
CPU Solution	Intel Core i7/i5
Socket Solution	
Socket Solution	LGA1150/LGA1151
Dimensions	
Dimensions	107*70*60mm
Material	
Material	Cu
Bearing Type	
Bearing Type	Two-Ball
Capability (Watt)	
Capability (Watt)	95W
Fan Speed (RPM)	
Fan Speed (RPM)	4200
Noise Level (dBA)	
Noise Level (dBA)	36
Life Expectancy (hrs)	
Life Expectancy (hrs)	50000
Weight	
Weight	812g
Key Features	
Key Features	IEI customized cooler for LGA1150 Intel CPU, RoHS

Ordering Information

CF-1150SE-R11	IEI customized cooler for LGA1150 Intel CPU,107*61*60,95W,CCL,;RoHS,R11
---------------	-------------------------------------------------------------------------