

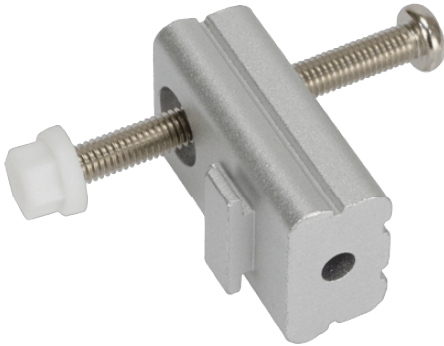
Panel PC& Monitor > Kits y soportes de montaje

PK-S19A

A set of Panel Mounting Kit is composed of a clamp and screw

Features

Maritime Panel Mounting Kit



x11

Specifications

| | |
|--------------|---------------------------|
| Dimensions | |
| Dimensions | 222 x 432 x 252 mm |
| Material | |
| Material | Aluminum |
| Weight | |
| Weight | 3.12 Kg |
| Key Features | |
| Key Features | 11 mounting kits for S19A |

Ordering Information

| | |
|-------------|---|
| PK-S19A-R10 | S19A panel mount kit, silver color, R10 |
|-------------|---|