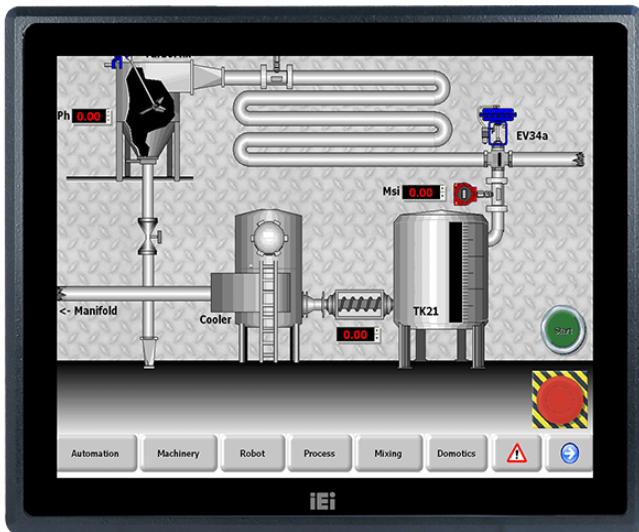


PPC-F17B-BT

17" Fanless Intel® Bay Trail Solution



Features

- » Intel® Celeron® J1900 quad-core SoC
- » Robust IP65 aluminum front bezel
- » Aesthetic ultra-thin bezel for seamless panel mount installation
- » Projected capacitive multi-touch and resistive single touch options
- » Dual full-size PCIe Mini card expansion
- » 9V~36V DC wide range DC input

Specifications

| Display | |
|--------------------------|--|
| LCD Size | 17"(5:4) |
| Brightness(cd/m2) | 350 |
| Max Resolution | 1280 (W) x 1024 (H) |
| Contrast Ratio | 800:1 |
| Backlight MTBF(hrs) | 50000 |
| I/O Interface | |
| I/O Ports and Switches | 2 x RJ-45 LAN Port |
| | 2 x USB 3.0 |
| | 2 x USB 2.0 |
| | 1 x HDMI™ output |
| | 2 x RS-232 |
| | 1 x RS-232/RS-422/485 |
| | 1 x VGA |
| | 1 x 9 V~36 V DC jack (4-pin) |
| | 1 x 9 V~36 V DC terminal block |
| | 1 x Line-out (PPC-F15B and PPC-17B only) |
| | 1 x Power switch |
| Power | |
| Power adapter | 9V~36V DC |
| Environment | |
| Operating Temperature | -10°C~50°C (14°F~122°F) |
| Humidity | 10% to 95% (non-condensing) |
| Storage Temperature | -20°C~60°C (-4°F~140°F) |
| IP Level | IP 65 compliant front panel |
| Physical Characteristics | |
| Dimensions (LxWxH) (mm) | 341.4 x 408.4 x 51.8 |
| Cutout Dimensions | 323 x 390 |
| Weight | |

| | |
|---------------------|--|
| Weight | 5 kg |
| LCD | |
| LCD Color | 16.7M |
| Pixel Pitch (mm) | 0.26 x 0.26 |
| Viewing Angle (H-V) | 170° / 160° |
| Touch | |
| Touch Screen | 2-point projected capacitive type touchscreen 6H |
| Touch Controller | 5-wire resistive single-touch type flat touchscreen 3H |

Ordering Information

| | |
|--------------------------|---|
| PPC-F17B-BTi-J1/2G/R-R13 | 17" 350 cd/m2 SXGA Panel PC with Intel® Celeron® Processor J1900, TDP 10W, 2GB RAM*1, support iRIS-2400, black color, 9-36V DC input, resistive touch window with AG coating, R13 |
|--------------------------|---|

Packing List

| | |
|---------------------------|-------------------|
| 1 x PPC-FxxB-BTi Panel PC | 1 x User Manual |
| 1 x Touch Pen | 1 x Power Cord |
| 1 x Screw Pack | 1 x Power Adapter |