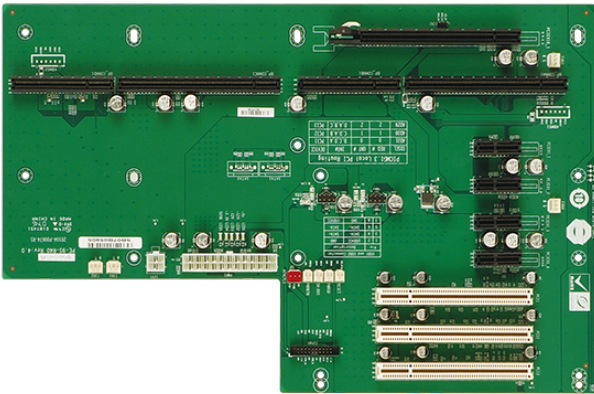


PE-9S

9-slot backplane with one PCIe x16 slot, four PCIe x1 slots and three PCI slots



Features

Specifications

I/O Interface	
I/O Interface	4 x Internal USB 2.0
Expansion	1 x PCIe x16
	4 x PCIe x1
	3 x PCI Slot
Power	
Power Supply	24+4 pin ATX

Ordering Information

PE-9S-R40	PICMG 1.3 ,9 Slots Backplane with 1PCIe x16 and 4PCIe x1 and 3PCI Slots,RoHS
-----------	--