

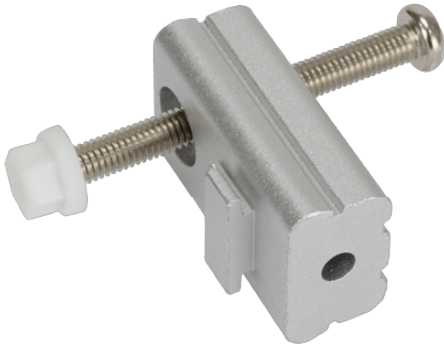
Panel PC &amp; Monitor &gt; Kit e supporti di montaggio

## PK-S19A

A set of Panel Mounting Kit is composed of a clamp and screw

### Features

Maritime Panel Mounting Kit



x11

### Specifications

Dimensions	
Dimensions	222 x 432 x 252 mm
Material	
Material	Aluminum
Weight	
Weight	3.12 Kg
Key Features	
Key Features	11 mounting kits for S19A

### Ordering Information

PK-S19A-R10	S19A panel mount kit, silver color, R10
-------------	---