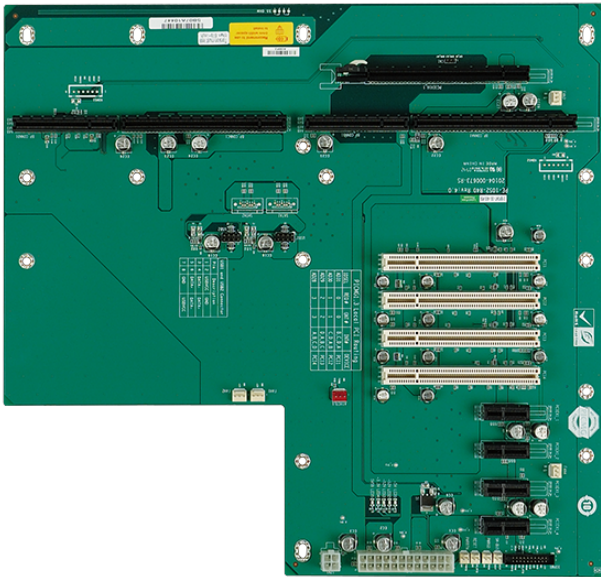


# PE-10S2

10-slot backplane with one PCIe x16 slot, four PCIe x1 slots and four PCI slots



## Features

- » 4 x Internal USB 2.0
- » 1 x PCIe x16
- » 4 x PCIe x1
- » 4 x PCI Slot

## Specifications

I/O Interface	
I/O Interface	4 x Internal USB 2.0
Expansion	1 x PCIe x16
	4 x PCIe x1
	4 x PCI Slot
Power	
Power Supply	24+4 pin TX

## Ordering Information

RACK-360GW-R22	4U 14-Slot Rackmount Chassis,FP With USB,White,AT Power Switch,W/O PSU,RoHS
RACK-360GB-R22	4U 14-Slot Rackmount Chassis,FP With USB,Black,AT Power Switch,W/O PSU,RoHS
RACK-305GW-R22	4U 14-Slot Rackmount Chassis,White,AT Power Switch,W/O PSU,RoHS
RACK-305GB-R22	4U 14-Slot Rackmount Chassis,Black,AT Power Switch,W/O PSU,RoHS
RACK-3000GW-R21	4U 14-Slot Rackmount Chassis,White,ATX Power Switch,W/O PSU,RoHS
RACK-3000GB-R21	4U 14-Slot Rackmount Chassis,Black,ATX Power Switch,W/O PSU,RoHS
PE-10S2-R40	PICMG 1.3 ,10 Slots Backplane with 1PCIe x16 and 4PCIe x1 and 4PCI Slots,RoHS