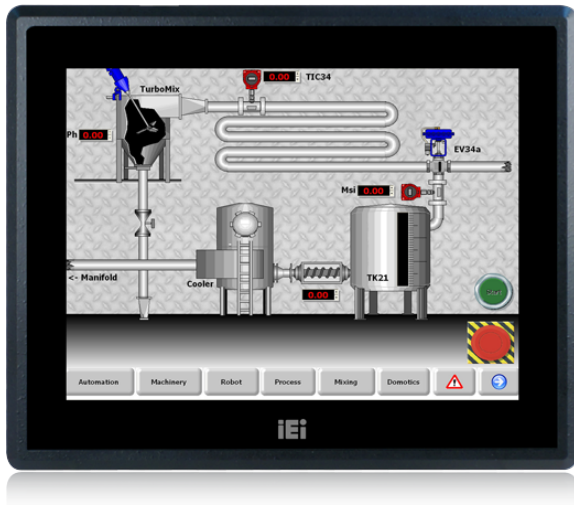


# DM-F12A

6.5"~15" DM-F IP65 Industrial Monitor



## Features

- » Robust IP65 aluminum front bezel
- » Aesthetic ultra-thin bezel for seamless panel mount installation
- » DC input
- » DVI / VGA flexible video input solution
- » Resistive single touch
- » Wide temperature support

## Specifications

Display	
Backlight MTBF(hrs)	50000
Brightness(cd/m2)	600
Contrast Ratio	700:1
LCD Size	12"(4:3)
Max Resolution	1024 (W) x 768 (H)
Environment	
Humidity	10% to 95% (non-condensing)
IP Level	IP 65 compliant front panel
Operating Temperature	-20°C ~ 60°C
Storage Temperature	-20°C ~ 70°C
I/O Interface	
I/O Ports and Switches	1 x VGA (DB-15)
	1 x HDMI™
	1 x DisplayPort1.1
	1 x USB 2.0 (touch)
	1 x RS-232 (reserved for resistive touch ATO)
	1 x Lockable 9V-36V DC jack
	1 x 9V-36V terminal block
LCD	
LCD Color	16.2M
Pixel Pitch (mm)	0.24 x 0.24
Viewing Angle (H-V)	160° /140°
Physical Characteristics	
Cutout Dimensions	244.8 x 304.8
Dimensions (LxWxH) (mm)	262.2 x 322.2 x 40.5
Power	
Power adapter	9V~36V DC
Touch	
Touch Controller	5-wire resistive single touch window/ Penmount 6000
Touch Screen	2-point projected capacitive touch window/ EETI EXC7200
Weight	

Weight	2.7 / 4.9
--------	-----------

## Ordering Information

DM-F12A/R-R31	12" 600 cd/m <sup>2</sup> XGA LCD monitor, Aluminum die casting front panel, Black color, W/ USB resistive touch screen, 9 ~36V DC input, Powder paint, R31
DM-F12A/PC-R32	12" 600 cd/m <sup>2</sup> XGA LCD monitor, Aluminum die casting front panel, Black color, W/ USB projected capacitive touch screen, 9 ~36V DC input, Powder paint, R32

## Packing List

1 x Touch Pen	1 x USB Cable
1 x VGA Cable	