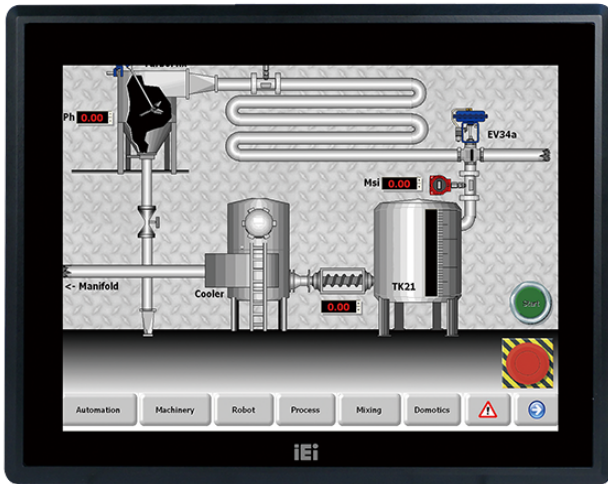


DM-F15A

6.5"~15" DM-F IP65 Industrial Monitor



Features

- » Robust IP65 aluminum front bezel
- » Aesthetic ultra-thin bezel for seamless panel mount installation
- » DC input
- » DVI / VGA flexible video input solution
- » Resistive single touch
- » Wide temperature support

Specifications

Display	
Backlight MTBF(hrs)	70000
Brightness(cd/m2)	450
Contrast Ratio	800:1
LCD Size	15"(4:3)
Max Resolution	1024 (W) x 768 (H)
Environment	
Humidity	10% to 95% (non-condensing)
IP Level	IP 65 compliant front panel
Operating Temperature	-20°C ~ 60°C
Storage Temperature	-20°C ~ 70°C
I/O Interface	
I/O Ports and Switches	1 x VGA (DB-15)
	1 x HDMI™
	1 x DisplayPort1.1
	1 x USB 2.0 (touch)
	1 x RS-232 (reserved for resistive touch ATO)
	1 x Lockable 9V-36V DC jack
	1 x 9V-36V terminal block
LCD	
LCD Color	16.2M
Pixel Pitch (mm)	0.29 x 0.29
Viewing Angle (H-V)	160° / 150°
Physical Characteristics	
Cutout Dimensions	285.6 x 361.1
Dimensions (LxWxH) (mm)	303 x 378.5 x 43.2
Power	
Power adapter	9V~36V DC
Touch	
Touch Controller	5-wire resistive single touch window/ Penmount 6000

Touch Screen	2-point projected capacitive touch window/ EETI EXC7200
Weight	
Weight	3.5 / 5.5

Ordering Information

DM-F15A/R-R41	15" 450 cd/m ² XGA LCD monitor, Aluminum die casting front panel, Black color, W/ USB resistive touch screen, 9 ~36V DC input, Powder paint, R41
DM-F15A/PC-R41	15" 450 cd/m ² XGA LCD monitor, Aluminum die casting front panel, Black color, W/ USB projected capacitive touch screen, 9 ~36V DC input, Powder paint, R41

Packing List

1 x Touch Pen	1 x USB Cable
1 x VGA Cable	