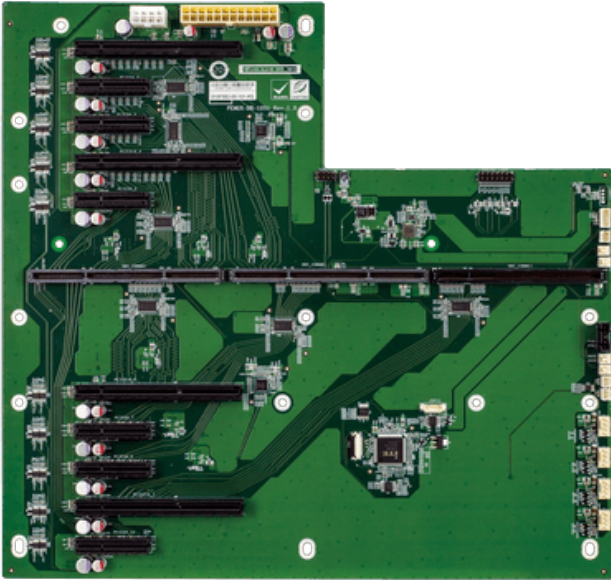


PEMUX-DB-10S1

1-Slot PEMUX backplane, 4 PCIe Gen 3.0 x8 w/ x16 slot, 6 PCIe Gen3.0 x4 w/ x4 slots, and RoHS



Features

1-Slot PEMUX backplane, 4 PCIe Gen 3.0 x8 w/ x16 slot, 6 PCIe Gen3.0 x4 w/ x4 slots, and RoHS

Specifications

| | |
|--------------------------|----------------------------|
| Physical Characteristics | |
| Dimensions (LxWxH) (mm) | 327.69 X 311.10 |
| I/O Interface | |
| Expansion | 4 x PCIe x8 6 x PCIe x4 |
| Power | |
| Power Supply | ATX power, 24+8pin ATX |

Ordering Information

| | |
|-------------------|---|
| PEMUX-DB-10S1-R10 | 1-Slot PEMUX backplane, 4 PCIe Gen 3.0 x8 w/ x16 slot, 6 PCIe Gen3.0 x4 w/ x4 slots, and RoHS |
|-------------------|---|