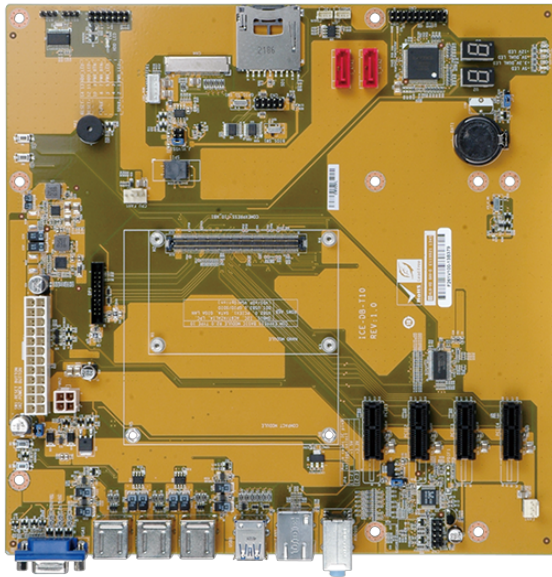


ICE-DB-T10

Baseboard for COM Express Type 10 Module COM.0 Rev. 2.1, support PICMG EAPI R1.0



Features

- » Intel® 22nm Atom™ on-board SoC supported
- » Type 10 connector pinout according to COM.0 R2.1
- » Supports 2 GB 1066/1333 MHz DDR3L memory
- » Optional soldered down 4 GB SSD
- » IEI One Key Recovery solution allows you to create rapid OS backup and recovery
- » Support wide range operating temperature: -40°C to +85°C

Specifications

| Physical Characteristics | |
|--------------------------|--|
| Dimensions (LxWxH) (mm) | 243.8 X 243.8 |
| Net Weight | 350g |
| Storage | |
| Storage | 2 x SATA 1 x SD/MicroSD card |
| I/O Interface | |
| Display Output | 1 x VGA 1 x Display Port 1 x eDP |
| Ethernet | 1 x LAN |
| Audio | Description: Realtek ALC662 HD Audio codec 1 x Line in 1 x Line out 1 x Mic 1 x Front Audio :2x5 pin |
| I/O Interface | 6 x External USB 2.0 2 x External USB 3.2 Gen1x1 |
| Expansion | 4 x PCIe x1 |
| Other Features | |
| TPM | 2x10 pin |
| Environment | |
| Operating Temperature | -20°C ~ 60°C |
| Storage Temperature | -30°C ~ 70°C |
| Certifications | |
| Safety & EMC | CE/FCC compliant |

Ordering Information

| | |
|----------------|--|
| ICE-DB-T10-R10 | Base Board for COM Express Type 10 Module support PICMG COM.0 R2.1 |
|----------------|--|

