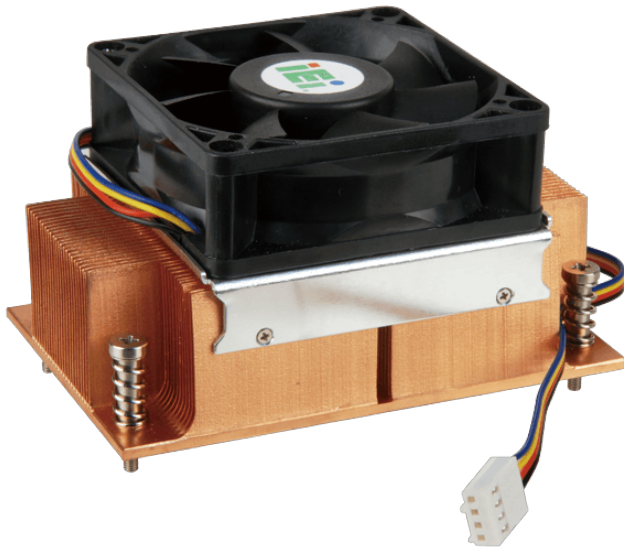


CF-1150SE

IEI customized cooler for LGA1150 Intel CPU, RoHS



Features

High performance thermal solutions

Specifications

| | |
|-----------------------|---|
| CPU Solution | |
| CPU Solution | Intel Core i7/i5 |
| Socket Solution | |
| Socket Solution | LGA1150/LGA1151 |
| Dimensions | |
| Dimensions | 107*70*60mm |
| Material | |
| Material | Cu |
| Bearing Type | |
| Bearing Type | Two-Ball |
| Capability (Watt) | |
| Capability (Watt) | 95W |
| Fan Speed (RPM) | |
| Fan Speed (RPM) | 4200 |
| Noise Level (dBA) | |
| Noise Level (dBA) | 36 |
| Life Expectancy (hrs) | |
| Life Expectancy (hrs) | 50000 |
| Weight | |
| Weight | 812g |
| Key Features | |
| Key Features | IEI customized cooler for LGA1150 Intel CPU, RoHS |

Ordering Information

| | |
|---------------|---|
| CF-1150SE-R11 | IEI customized cooler for LGA1150 Intel CPU,107*61*60,95W,CCL,;RoHS,R11 |
|---------------|---|