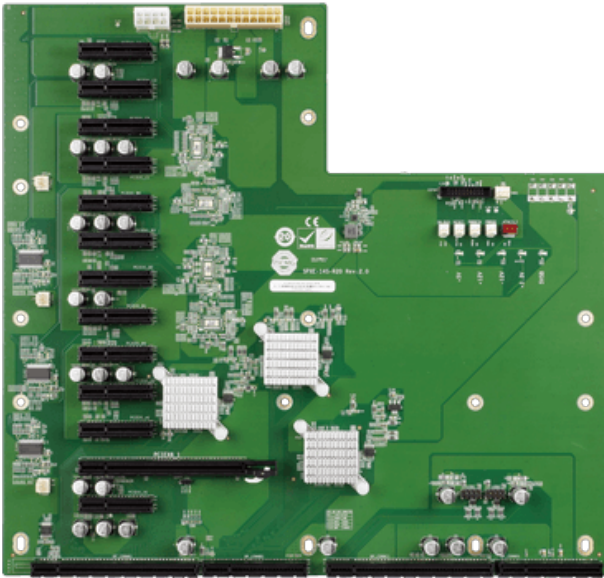


SPXE-14S

14-Slot PICMG 1.3 PCIe to PCI Bridge Backplane, 1 PCIe x8 w/ x16 slot, 12 PCIe x1, RoHS



Features

- » 1 x PCIe x8 :x16 connector
- » 12 x PCIe x1 :x4 connector

Specifications

| Physical Characteristics | |
|--------------------------|----------------------------|
| Mounting | RACK-305G |
| | RACK-360G |
| | RACK-3000G |
| Dimensions (LxWxH) (mm) | 327.69 X 311.1 |
| I/O Interface | |
| Expansion | 1 x PCIe x8 :x16 connector |
| | 12 x PCIe x1 :x4 connector |
| Power | |
| Power Supply | 24+8pin ATX |

Ordering Information

| | |
|-----------------|---|
| SPXE-14S-R20 | 14-slot PICMG 1.3 backplane with one PCIe x16 slot (x8 signal) and twelve PCIe x1 slots |
| RACK-360GW-R22 | 4U 14-Slot Rackmount Chassis, FP With USB, White, AT Power Switch, W/O PSU, RoHS |
| RACK-360GB-R22 | 4U 14-Slot Rackmount Chassis, FP With USB, Black, AT Power Switch, W/O PSU, RoHS |
| RACK-305GW-R22 | 4U 14-Slot Rackmount Chassis, White, AT Power Switch, W/O PSU, RoHS |
| RACK-305GB-R22 | 4U 14-Slot Rackmount Chassis, Black, AT Power Switch, W/O PSU, RoHS |
| RACK-3000GW-R21 | 4U 14-Slot Rackmount Chassis, White, ATX Power Switch, W/O PSU, RoHS |
| RACK-3000GB-R21 | 4U 14-Slot Rackmount Chassis, Black, ATX Power Switch, W/O PSU, RoHS |