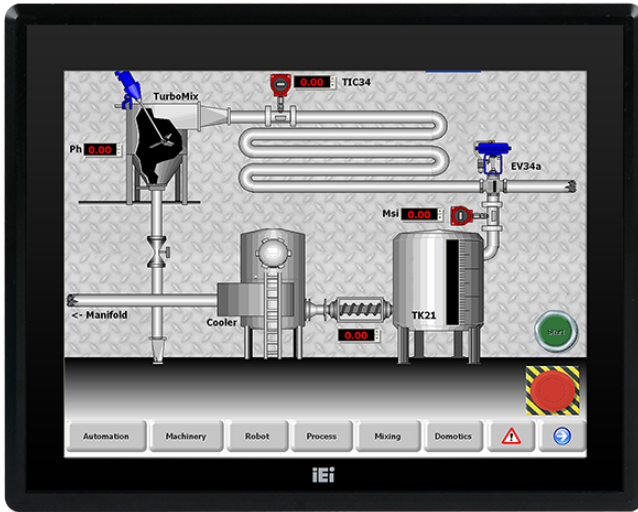


PPC-F15A-H81

Intelligent Industrial Panel PC



Features

- » Scalable Intel® H81 chipset supports LGA1150 Intel® 4th generation Core™ i7/i5/i3, Pentium® or Celeron® processor with up to 65W TDP
- » Robust IP65 aluminum front bezel
- » Aesthetic ultra-thin bezel for seamless panel mount installation
- » Projected capacitive multi-touch
- » Dual full-size PCIe Mini card expansion
- » AC/DC power input options (DC model by build to order manufacturing)

Specifications

| Display | |
|--------------------------|--|
| Backlight MTBF(hrs) | 70000 |
| Brightness(cd/m2) | 450 |
| Contrast Ratio | 800:1 |
| LCD Size | 15"(4:3) |
| Max Resolution | 1024 (W) x 768 (H) |
| Environment | |
| Humidity | 10% to 95% (non-condensing) |
| IP Level | IP 65 compliant front panel |
| Operating Temperature | -10°C~50°C (14°F~122°F) |
| Storage Temperature | -20°C~60°C (-4°F~140°F) |
| I/O Interface | |
| I/O Ports and Switches | 2 x RJ-45 LAN Port |
| | 2 x USB 3.0 |
| | 4 x USB 2.0 |
| | 1 x HDMI™ output |
| | 4 x RS-232 |
| | 1 x RS-422/485 |
| | 1 x VGA output |
| | 1 x AC/DC power plug (DC model is by build to order manufacturing) |
| | 1 x AT/ATX switch |
| | 1 x Clear CMOS |
| | 1 x Reset button |
| | 1 x Power switch |
| LCD | |
| LCD Color | 16.2M |
| Pixel Pitch (mm) | 0.29 x 0.29 |
| Viewing Angle (H-V) | 160° / 140° |
| Physical Characteristics | |

| | |
|-------------------------|---|
| Cutout Dimensions | 285.6 x 361.1 |
| Dimensions (LxWxH) (mm) | 303 x 378.5 x 68.7 |
| Power | |
| Power Supply | AC input ATX power supply |
| | 220W power supply |
| | Input: 90VAC-264VAC, 50/60Hz |
| | Output (max.): 3.3V@10A, 5V@14A, 12V@14A, -12V@0.3A |
| Touch | |
| Touch Controller | 5-wire resistive type single touch window (Penmount 6000), 3H |
| Touch Screen | 2-point projected capacitive touch window (EETI EXC7200), 6H |
| Weight | |
| Weight | 5.6/ 8.3 |

Ordering Information

| | |
|----------------------------|---|
| PPC-F15AA-H81i-i5/4G/R-R23 | 15" 450 cd/m2 XGA Panel PC with Intel H81 chipset, Core i5 Quad Core i5-4570S Processor (6M Cache, up to 3.60 GHz), TDP 65W, 2GB RAM*2, support iRIS-2400, black color, PSU ACE-A622C, resistive touch window with AG coating, R23 |
| PPC-F15AA-H81i-P/4G/R-R23 | 15" 450 cd/m2 XGA Panel PC with Intel H81 chipset, Intel® Pentium® Processor G3420 (3M Cache, 3.20 GHz), TDP 53W, 2GB RAM*2, support iRIS-2400, black color, PSU ACE-A622C, resistive touch window with AG coating, R23 |
| PPC-F15AA-H81i-P/4G/PC-R23 | 15" 450 cd/m2 XGA Panel PC with Intel H81 chipset, Intel® Pentium® Processor G3420 (3M Cache, 3.20 GHz), TDP 53W, 2GB RAM*2, support iRIS-2400, black color, PSU ACE-A622C, projective capacitive touch window with AG coating, R23 |

Packing List

| | |
|---|---------------|
| 1 x Power Cord (Depends on shipping region) | 1 x Screw Kit |
|---|---------------|