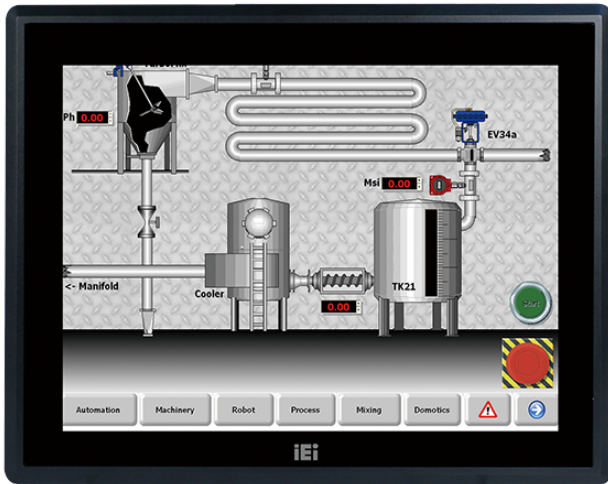


DM-F15A

6.5"~15" DM-F IP65 Industrial Monitor



Features

- » Robust IP65 aluminum front bezel
- » Aesthetic ultra-thin bezel for seamless panel mount installation
- » DC input
- » DVI / VGA flexible video input solution
- » Resistive single touch
- » Wide temperature support

Specifications

| Display | |
|--------------------------|---|
| Backlight MTBF(hrs) | 70000 |
| Brightness(cd/m2) | 450 |
| Contrast Ratio | 800:1 |
| LCD Size | 15"(4:3) |
| Max Resolution | 1024 (W) x 768 (H) |
| Environment | |
| Humidity | 10% to 95% (non-condensing) |
| IP Level | IP 65 compliant front panel |
| Operating Temperature | -20°C ~ 60°C |
| Storage Temperature | -20°C ~ 70°C |
| I/O Interface | |
| I/O Ports and Switches | 1 x VGA (DB-15) |
| | 1 x HDMI™ |
| | 1 x DisplayPort1.1 |
| | 1 x USB 2.0 (touch) |
| | 1 x RS-232 (reserved for resistive touch ATO) |
| | 1 x Lockable 9V-36V DC jack |
| | 1 x 9V-36V terminal block |
| LCD | |
| LCD Color | 16.2M |
| Pixel Pitch (mm) | 0.29 x 0.29 |
| Viewing Angle (H-V) | 160° / 150° |
| Physical Characteristics | |
| Cutout Dimensions | 285.6 x 361.1 |
| Dimensions (LxWxH) (mm) | 303 x 378.5 x 43.2 |
| Power | |
| Power adapter | 9V~36V DC |
| Touch | |
| Touch Controller | 5-wire resistive single touch window/ Penmount 6000 |

| | |
|--------------|---|
| Touch Screen | 2-point projected capacitive touch window/ EETI EXC7200 |
| Weight | |
| Weight | 3.5 / 5.5 |

Ordering Information

| | |
|----------------|--|
| DM-F15A/R-R41 | 15" 450 cd/m ² XGA LCD monitor, Aluminum die casting front panel, Black color, W/ USB resistive touch screen, 9 ~36V DC input, Powder paint, R41 |
| DM-F15A/PC-R41 | 15" 450 cd/m ² XGA LCD monitor, Aluminum die casting front panel, Black color, W/ USB projected capacitive touch screen, 9 ~36V DC input, Powder paint, R41 |

Packing List

| | |
|---------------|---------------|
| 1 x Touch Pen | 1 x USB Cable |
| 1 x VGA Cable | |