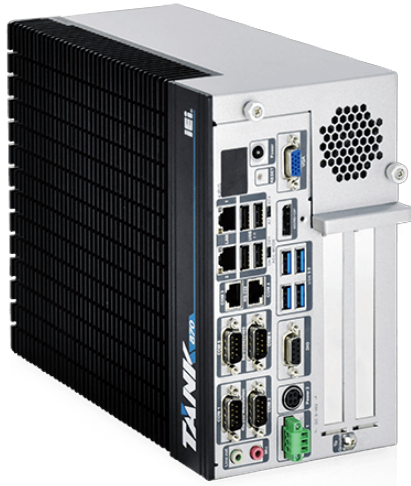


TANK-870-Q170-QGW

High-Performance 6th/7th Generation Intel® Core™ Processor, Fanless Embedded Computer



Features

- » Built-in QTS Gateway operating system that can be visualized immediately
- » Supports remote connection (myQNAPcloud) and hybrid backup (Hybrid Backup Sync)
- » QRM+ easily monitors IPMI equipment, servers, PCs and production line equipment
- » Q'center centralizes management of multiple QNAP NAS and the IPC equipped with QTS Gateway
- » Surveillance Station for remote video surveillance, 24/7 security
- » Seven levels of data security protection to protect your valued data

Specifications

Form factor	
SBC Form Factor	» CPU:
	Intel 7th Gen Core CPU &
	Intel® Core™ i7-6700TE (2.4 GHz, quad-core, TDP=35W)
	Intel® Core™ i5-6500TE (2.3 GHz, quad-core, TDP=35W)
	» Chipset: Intel® Q170
	» System Memory:
	2 x 260-pin DDR4 SO-DIMM, pre-installed one 4GB (system max: 32GB)
	» Power:
	Input - DC Jack: 9 V~36 V DC, Terminal Block: 9 V~36 V DC
	Consumption: 19 V@3.68 A (Intel® Core™ i7-6700TE with 8 GB memory)
	Internal Connector: 5V@3A or 12V@3A
	» Reliability:
	Operating Shock - Half-sine wave shock 5G; 11ms; 100 shocks per axis
	Operating Vibration - MIL-STD-810G 514.6 C-1 (with SSD)
	Safety/EMC - CE/FCC
	» IPMI: 1 x iRIS-2400 (optional)
System	
Cooling method / System Fan	Fanless
Chipset	Intel® Q170
Drive Bays	2 x 2.5" SATA 6Gb/s HDD/SSD bay (RAID 0/1 support)
Indicator&Buttons	
Buttons	1 x Power Button
	1 x Reset Button
	1 x AT/ATX Switch
	1 x ACC Mode
I/O Interface	
I/O Ports	» USB: 4 x USB 3.0, 4 x USB 2.0
	» Ethernet:

	2 x RJ-45
	LAN1 (iRIS): Intel® I210 PCIe controller
	LAN2: Intel® I219LM PCIe controller
	» COM Port:
	4 x RS-232 (2 x RJ-45, 2 x DB-9 w/2.5KV isolation protection)
	2 x RS-232/422/485 (DB-9)
	» Digital I/O: 8 bit Digital I/O, 4 bit input / 4 bit output
	» Display:
	1 x VGA (Up to 1920 x 1200@60Hz)
	1 x HDMI™/DP (Up to 3840x2160@30Hz / 4096x2304@60Hz)
	1 x iDP (optional)
	» Audio: 1 x Line-out, 1 x Mic-in
Environment	
Operating Temperature	i7-6700TE -20°C ~ 45°C with air flow (SSD)
	i5-6500TE -20°C ~ 60°C with air flow (SSD)
Humidity	10% ~ 95%, non-condensing
Physical Characteristics	
Construction	Extruded aluminum alloys
Dimensions	
Dimensions	2-slot: 121.5 x 255.2 x 205 (WxDxH) (mm)
	4-slot: 154.8 x 255.2 x 205 (WxDxH) (mm)
Weight	
Weight	2-slot: 4.2 kg/6.3 kg
	4-slot: 4.5 kg/6.5 kg
Color	
Color	Black C + Silver
Expansion Slots	
Expansion Slots	» PCIe Mini:
	1 x Half-size PCIe Mini slot
	1 x Full-size PCIe Mini slot (supports mSATA, colay with SATA)
	» Backplane:
	2-slot model: 1 x PCIe x16, 1 x PCI
	2-slot model: 2 x PCIe x8
	4-slot model: 2 x PCIe x8, 2 x PCI, 1 x Full-size PCIe Mni
	4-slot model: 1 x PCIe x16, 3 x PCI, 1 x Full-size PCIe Mni

Ordering Information

TANK-870-Q170-QGW-2A-R11	Ruggedized Fanless embedded system with Intel® Core i5-6500TE 2.3GHz, (up to 3.3 GHz, Quad Core, TDP 35W), 8GB DDR4 pre-installed memory, 2 x PCIe by 8 expansion, VGA/HDMI™+DP/iDP, iRIS-2400 optional, 9~36V DC, with QTS-Gateway, RoHS
--------------------------	---

Packing List

1 x Chassis Screw	1 x Mounting Bracket
-------------------	----------------------