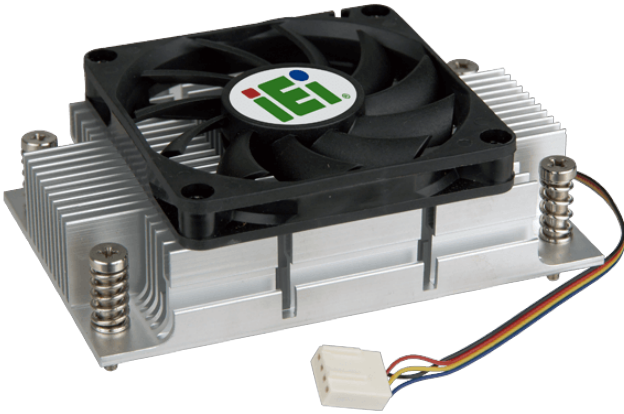


CF-1150SF

IEI customized cooler for LGA1150 Intel CPU, RoHS

Features

High performance thermal solutions



Specifications

| | |
|-----------------------|---|
| CPU Solution | |
| CPU Solution | Intel Core i7/i5 |
| Socket Solution | |
| Socket Solution | LGA1150/LGA1151 |
| Dimensions | |
| Dimensions | 107*70*35mm |
| Material | |
| Material | Al |
| Bearing Type | |
| Bearing Type | Two-Ball |
| Capability (Watt) | |
| Capability (Watt) | 54W |
| Fan Speed (RPM) | |
| Fan Speed (RPM) | 4500 |
| Noise Level (dBA) | |
| Noise Level (dBA) | 39 |
| Life Expectancy (hrs) | |
| Life Expectancy (hrs) | 50000 |
| Weight | |
| Weight | 220g |
| Key Features | |
| Key Features | IEI customized cooler for LGA1150 Intel CPU, RoHS |

Ordering Information

| | |
|---------------|--|
| CF-1150SF-R10 | IEI customized cooler for LGA1150 Intel CPU, 107*70*35, 54W, CCL; RoHS |
|---------------|--|