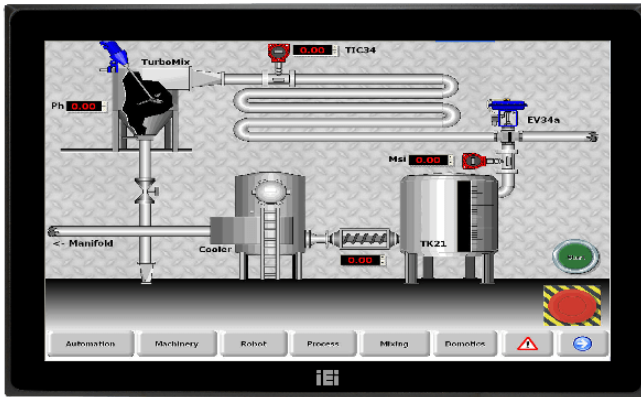


DM-FW19A

18.5" DM-F IP65 Industrial Monitor

Features

- » Robust IP65 aluminum front bezel
- » Aesthetic ultra-thin bezel for seamless panel mount installation
- » DC input
- » DP/VGA flexible video input solution
- » PCAP AG coating touch
- » Wide temperature support



Specifications

Display	
Backlight MTBF(hrs)	50000
Brightness(cd/m2)	400
Contrast Ratio	1000:1
LCD Size	18.5" (16:9)
Max Resolution	1366 (W) X 768 (H)
Environment	
Humidity	10% to 95% (non-condensing)
IP Level	IP 65 compliant front panel
Operating Temperature	-20°C ~ 60°C
Storage Temperature	-20°C ~ 70°C
LCD	
LCD Color	16.7M
Pixel Pitch (mm)	0.3 x 0.3
Viewing Angle (H-V)	170° / 160°
Physical Characteristics	
Cutout Dimensions	447.8 x 267.2
Dimensions (LxWxH) (mm)	468.8 x 288.2 x 48.9
Power	
Power adapter	9V~36V DC
Touch	
Touch Controller	EETI EXC3 series
Touch Screen	10-point projected capacitive touch window
Weight	
Weight	5 / 8.1
I/O Interface	
I/O Interface	1 x DC Input Jack(9~36V (Lockable))
	1 x Display Port
	1 x HDMI™

	1 x Power In(9V-36V terminal block)
	1 x USB 2.0(touch)
	1 x VGA

Ordering Information

DM-FW19A/PC-R21	18.5" 400 cd/m ² 1366x768 LCD monitor, Aluminum front panel, Black color, W/ USB PCAP touch screen, 9 ~36V DC input, Powder paint, R21
-----------------	---

Packing List

1 x USB Cable	1 x VGA Cable
---------------	---------------